



Sunday 31 May 2026

**162
KILOMETERS**

**135
WAYPOINTS**

**162
FUEL RANGE**

Grand Hotel Ter Duin
Hogeweg 55, 4328 PB Burgh-Haamstede

Middelburg

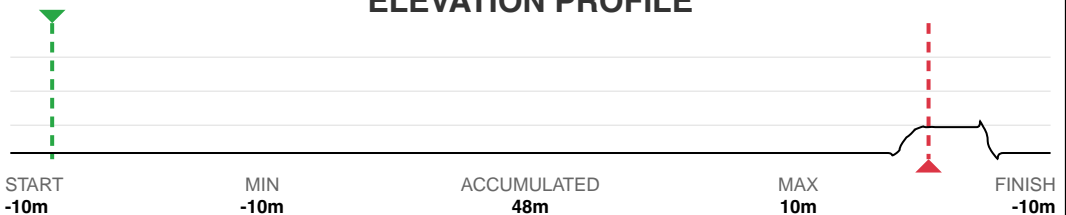
Grand Hotel Ter Duin



START
51°41.049'N
3°43.338'E

FINISH
51°41.041'N
3°43.344'E

ELEVATION PROFILE



WARNING!!!

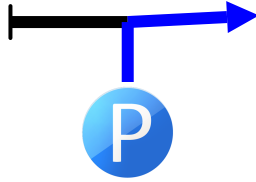
THIS ROUTE MAY BE DANGEROUS. FOLLOW THIS ROUTE AT YOUR OWN RISK.

Conditions change over time. Route leads to remote areas many miles from help. This is not a "closed" course. The route crosses and travels on public roads and highways where other vehicles, pedestrians, and animals may be present. Some hazards are identified here, for illustration purposes only, but most hazards are not identified or marked. Information provided is approximate, and should not be considered precise. Obey all laws and use caution at all times. If signs, maps, or other indicators suggest the route travels into closed, illegal, private property, or otherwise restricted areas, this roadbook should not be followed into such areas.

RALLY NAVIGATOR IS NOT RESPONSIBLE FOR THE ACCURACY OR SAFETY OF THIS ROUTE.

0,00

0.00 mi



Leave parking to the right

51°41.049'N
3°43.338'E

0,00

1

0,00

0,00

0,00

2



Grand Hotel
Ter Duin



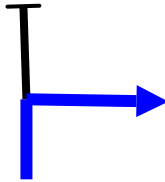
@Grand Hotel
Ter Duin
reset
to 0000

0000
Reset

51°41.050'N
3°43.336'E

0,51

0.32 mi



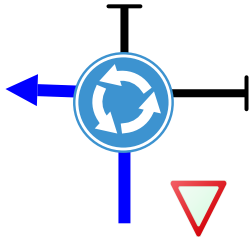
51°41.245'N
3°43.648'E

0,51

3

0,94

0.58 mi



[N57]
<< Burgh-Haamstede

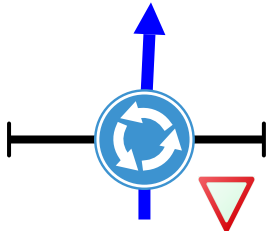
51°41.084'N
3°43.909'E

0,43

4

2,40

1.49 mi



[N57]
Burgh-Haamstede ^^
Renesse ^^

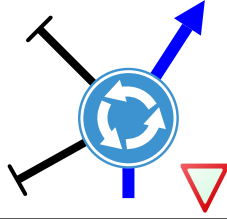
51°41.517'N
3°44.888'E

1,46

5

3,13

1.94 mi



[N57]

Zierikzee >>
Rotterdam >>

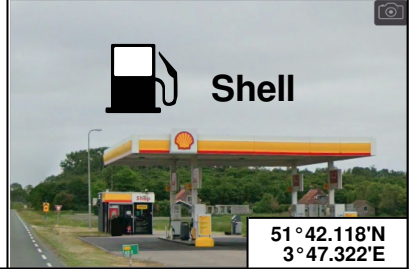
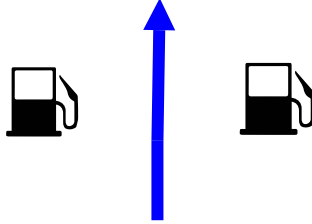
51°41.858'N
3°45.154'E

0,73

6

5,75

3.57 mi



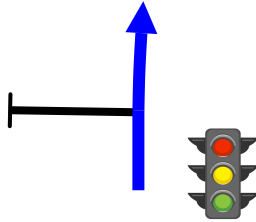
51°42.118'N
3°47.322'E

2,62

7

7,19

4.47 mi



Serooskerke ^^
Brouwershaven ^^

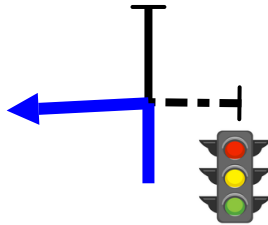
51°42.007'N
3°48.513'E

1,44

8

7,67

4.77 mi



<< Serooskerke
<< Brouwershaven

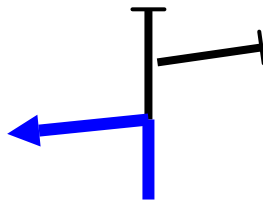
51°41.903'N
3°48.899'E

0,48

9

10,68

6.64 mi



<< Elkerzee
<< Scharendijke

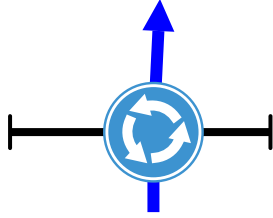
51°42.422'N
3°51.287'E

3,01

10

13,27

8.25 mi



Centrum ^^
Den Osse ^^

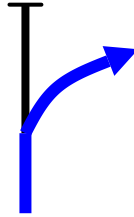
51°43.722'N
3°50.495'E

2,59

11

13,74

8.54 mi



Den Osse >>

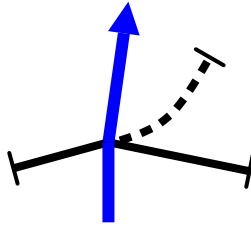
51°43.964'N
3°50.483'E

0,47

12

14,82

9.21 mi



[Langendijk]

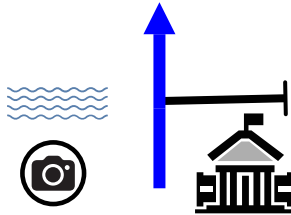
51°44.264'N
3°51.257'E

1,08

13

16,69

10.37 mi



[Langendijk]

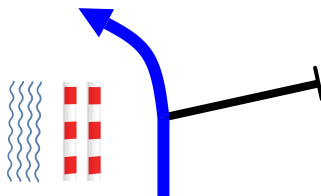
51°44.547'N
3°52.821'E

1,87

14

17,71

11.00 mi



[Heernisweg]

51°44.357'N
3°53.456'E

1,02

15

PROXIMA NOTA
PROCH NOTE
NEXT NOTE

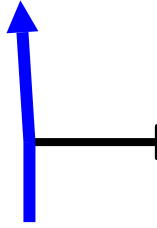
0,39

18,10

11.25 mi

0,39

16

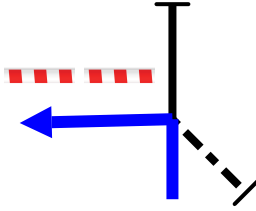


19,45

12.09 mi

1,35 ↓

17



<< Brouws Museum
[Noorddijk]

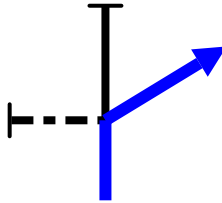
51°43.777'N
3°54.462'E

19,68

12.23 mi

0,23

18



Brouws Museum >>
Centrum >>
Jachthaven >>

30

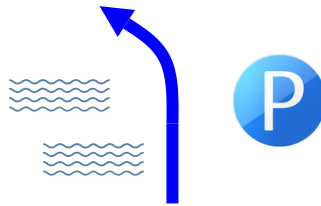
51°43.785'N
3°54.663'E

20,00

12.43 mi

0,32

19



Follow the road
through the
harbour

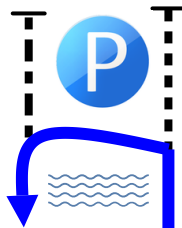
51°43.646'N
3°54.814'E

20,44

12.70 mi

0,44

20

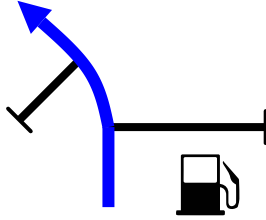


Follow the road
through the
harbour

51°43.559'N
3°54.785'E

20,94

13.01 mi



[Provinciale
Straatweg]

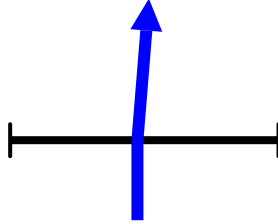
0,50

21

51°43.465'N
3°54.996'E

21,30

13.24 mi



Zonnemaire ^^
Dreischor ^^

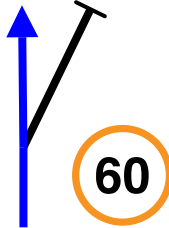
0,36

22

51°43.278'N
3°55.057'E

23,66

14.70 mi



Stay on
[Blooisedijk]

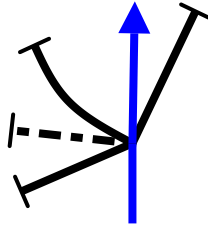
2,36

23

51°42.804'N
3°56.515'E

24,09

14.97 mi



[Dijk van
Bommeneede]

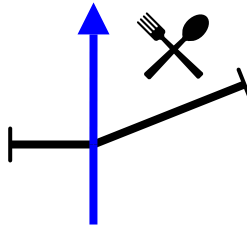
0,43

24

51°42.829'N
3°56.895'E

24,47

15.20 mi



[Zuidweg]

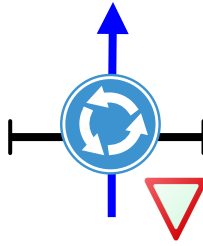
0,38

25

51°42.795'N
3°57.149'E

25,26

15.70 mi



Noordgouwe ^^
Zierikzee ^^

51°42.404'N
3°56.869'E

0,79

26

27,00

16.78 mi



Schuddebeurs ^^
Zierikzee ^^

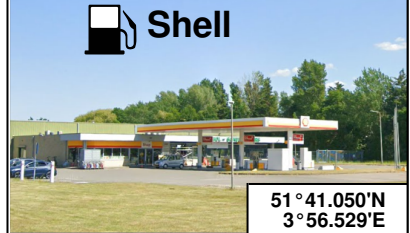
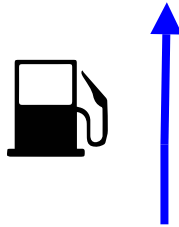
51°41.613'N
3°56.120'E

1,74

27

28,17

17.50 mi



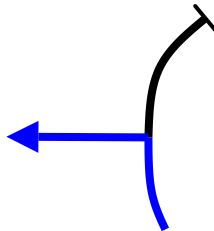
51°41.050'N
3°56.529'E

1,17

28

29,35

18.24 mi



<< Dreischor
<< Nieuwerkerk

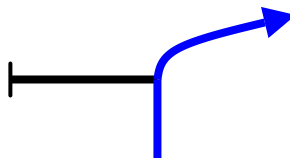
51°40.520'N
3°57.086'E

1,18

29

30,71

19.08 mi



[Zuidelijk]

51°41.003'N
3°57.877'E

1,36

30

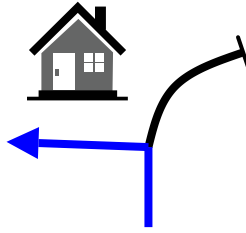
PROXIMA NOTA
PROCH NOTE
NEXT NOTE

1,48

Danger !!

32,19

20.00 mi



[Beldert]
mind the
cyclists!



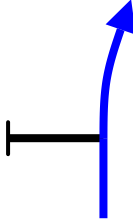
51°40.903'N
3°59.115'E

1,48

31

33,67

20.92 mi



[Weg door het
Dijkwater]



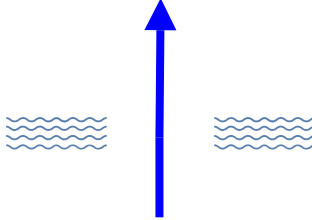
51°41.044'N
4°00.311'E

1,48

32

34,50

21.44 mi



Nice view!
Keep following
the main road



51°40.808'N
4°00.904'E

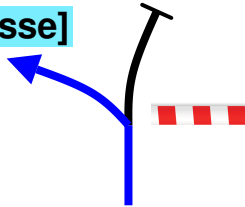
0,83

33

37,65

23.39 mi

[Bruinisse]



[Hageweg]
stay left on the main
road with the "dike"
on your left



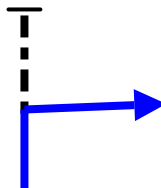
51°40.729'N
4°03.323'E

3,15

34

40,28

25.03 mi



[Groeneweg]



51°40.036'N
4°05.304'E

2,63

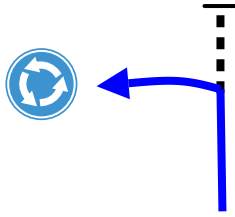
35

41,5¹

25.79 mi

1,23 ↓

36



**Left towards
roundabout**

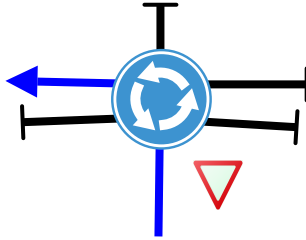
51°39.588'N
4°04.616'E

41,5³

25.81 mi

0,02

37



**<< Steenberg
<< Middelharnis**

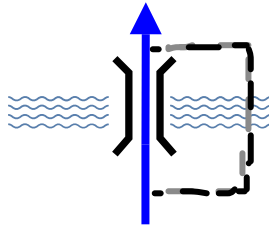
51°39.577'N
4°04.618'E

42,9³

26.68 mi

1,40

38



**Cross the lock
2 possible ways !**

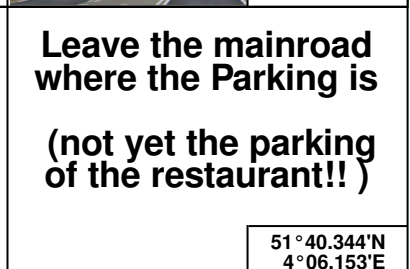
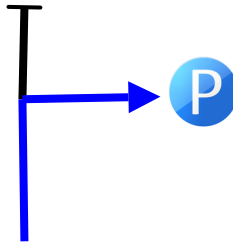
51°39.986'N
4°05.559'E

43,8⁹

27.27 mi

0,96 ↓

39



**Leave the mainroad
where the Parking is
(not yet the parking
of the restaurant!!)**

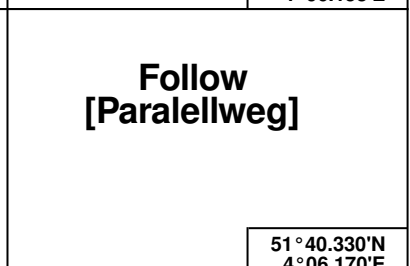
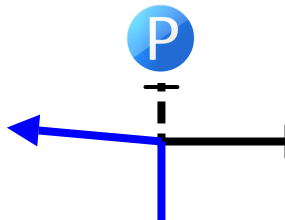
51°40.344'N
4°06.153'E

43,9²

27.29 mi

0,03

40



**Follow
[Paralellweg]**

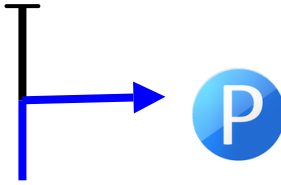
51°40.330'N
4°06.170'E

46,6⁸

29.01 mi

2,76 ↓

41



P Parking
Grevelingen
Restaurant
Coffee Time!

51°40.630'N
4°08.501'E

46,9⁵

29.17 mi

0,27 ↓

42



Park your car here! Time for a coffee and a local delicacy!

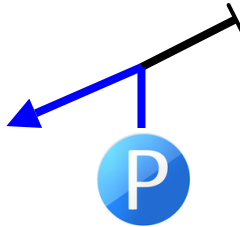
51°40.574'N
4°08.615'E

47,2¹

29.33 mi

0,26

43



Leave the parking at the end to the left
Mind the other (Euroutour) drivers!!

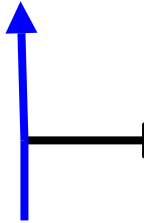
51°40.648'N
4°08.654'E

50,1⁶

31.17 mi

2,95

44



Stay on the [Paralellweg]
do NOT go back on the mainroad!

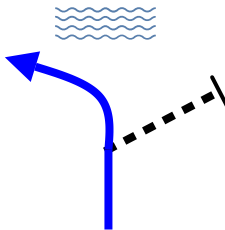
51°40.327'N
4°06.171'E

50,9⁰

31.63 mi

0,74

45



[Parallelweg] over the Lock

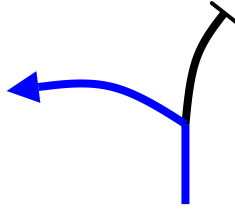
51°40.063'N
4°05.695'E

51,30

31.88 mi

0,40 ↓

46



After the lock, first to the left

[Havendijk]

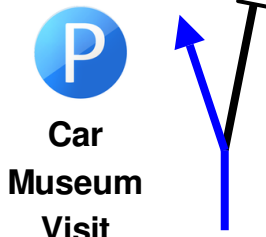
51°39.968'N
4°05.602'E

51,38

31.93 mi

0,08 ↓

47



Car Museum Visit

Park your car here in this nice harbour

Museum can be reached walking into the village

51°39.934'N
4°05.636'E

51,39

31.93 mi

0,01 ↓

48



There are two different parking locations, you will be directed to your parking space!

51°39.931'N
4°05.643'E

51,60

32.06 mi

0,21 ↓

49



Leave the parking the same way you entered the parking

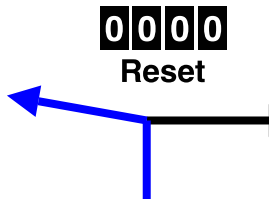
51°39.875'N
4°05.774'E

51,87

0,00

0,27

50



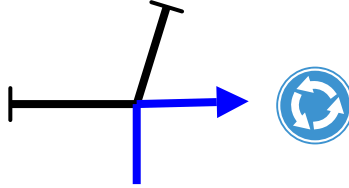
At the end of [Havendijk] Left to [Paralellweg]

0000
Reset

51°39.970'N
4°05.604'E

1,40⁰

0.87 mi



Back to the roundabout
watch out for other (Eurotour) cars

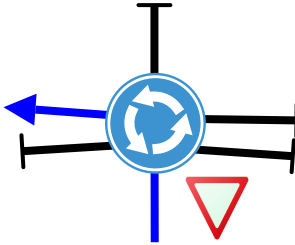
51°39.535'N
4°04.644'E

1,40↓

51

1,45

0.90 mi



<< Oosterland
<< Zierikzee

51°39.558'N
4°04.637'E

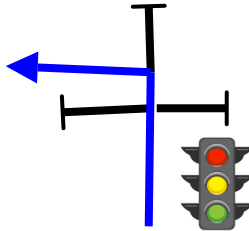
0,05

52



11,21

6.97 mi



<< [N256]
<< Goes

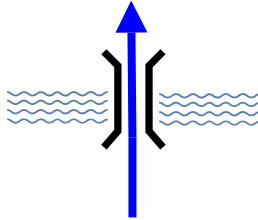
51°39.020'N
3°56.609'E

9,76

53

14,61

9.08 mi



You cross the "Zeeland bridge"
Zeelandbrug
5022 meter long!

51°37.795'N
3°54.917'E

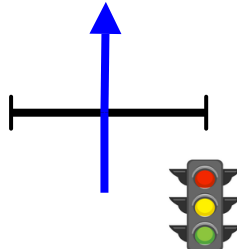
3,40

54



21,05

13.08 mi



Keep following the [N256]

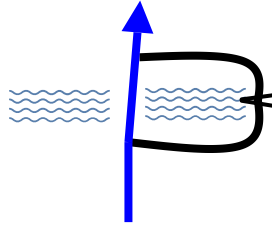
51°35.129'N
3°51.331'E

6,44

55

25,81

16.04 mi



Cross the Lock
"Zandkreeksluis"



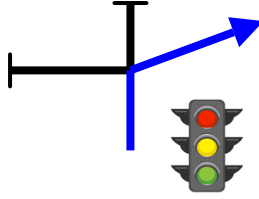
51°32.713'N
3°51.888'E

4,76

56

27,49

17.08 mi



Wolphaartsdijk >>
Veerse meer >>

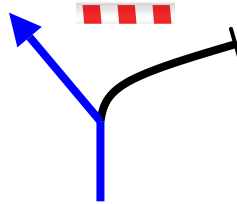
1,68

57

51°31.819'N
3°52.098'E

28,47

17.69 mi



<< Wolphaartsdijk
<< Oud Sabbinge

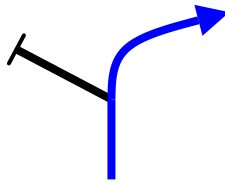
0,98

58

51°31.825'N
3°51.253'E

30,74

19.10 mi



[Frederiksstraat]

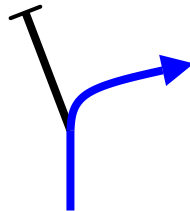
2,27 ↓

59

51°31.585'N
3°49.441'E

31,00

19.26 mi



Oud Sabbinge >>

[Lepelstraat]

0,26 ↓

60

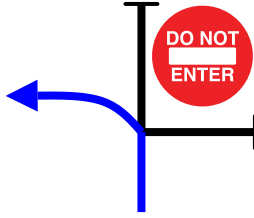
51°31.664'N
3°49.299'E

31,13

19.34 mi

0,13 ↓

61



[Molendijk]

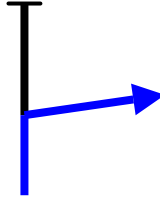
51°31.728'N
3°49.333'E

31,18

19.37 mi

0,05 ↓

62



Veerse Meer >>
[Oostkerkestraat]



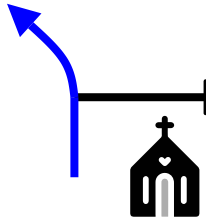
51°31.731'N
3°49.283'E

31,45

19.54 mi

0,27

63



[Papeweg]

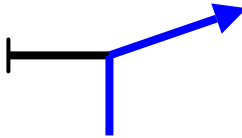
51°31.876'N
3°49.286'E

31,91

19.83 mi

0,46

64



Veerse Meer >>
[Veerweg]



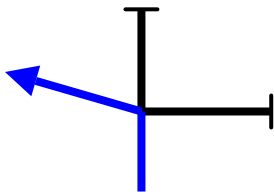
51°31.993'N
3°48.945'E

32,70

20.32 mi

0,79

65



<< KANO A
[Muidenweg]

51°32.407'N
3°48.814'E

42,6²

26.48 mi

9,92

66



[Oranjepolderseweg]



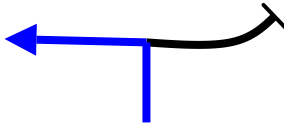
51°30.465'N
3°42.248'E

44,8⁰

27.84 mi

2,18

67



<< Arnemuiden

[Van Cittersweg]

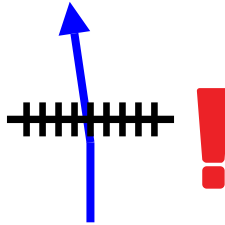
51°30.811'N
3°40.551'E

46,0⁸

28.63 mi

1,28

68



[Schuttershof]

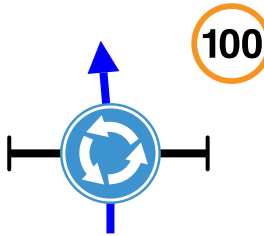
51°30.143'N
3°40.661'E

46,5⁶

28.93 mi

0,48

69



To the A58



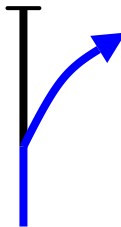
51°29.901'N
3°40.582'E

49,8⁶

30.98 mi

3,30

70

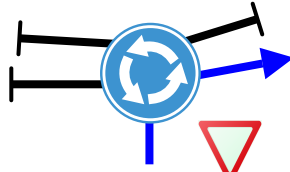


Take the exit 39
to
Middelburg-Centrum

51°28.726'N
3°38.605'E

50,50

31.38 mi



Middelburg >>

[Sloeweg noord]

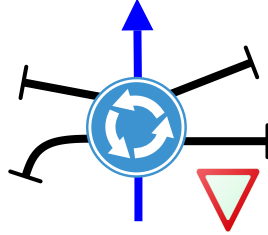
0,64

71

51°28.663'N
3°38.084'E

51,05

31.72 mi



Centrum ^^
[Schroeweg]

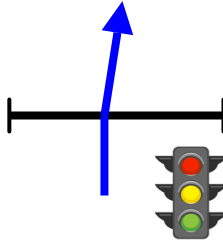
0,55

72

51°28.857'N
3°37.735'E

51,47

31.98 mi



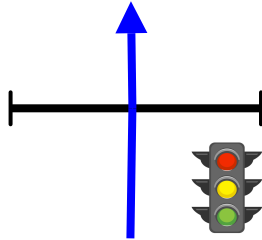
51°29.029'N
3°37.517'E

0,42

73

52,31

32.50 mi



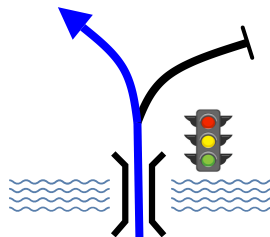
51°29.422'N
3°37.160'E

0,84

74

52,96

32.91 mi



Keep left
<< Vlissingen
<< Zoutelande

0,65

75

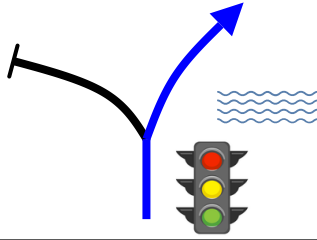
51°29.679'N
3°36.779'E

53,11

33.00 mi

0,15

76



Keep Right
[Het Groene Woud]

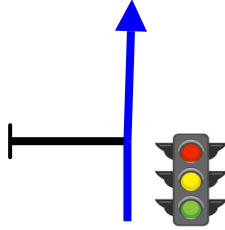
51°29.697'N
3°36.652'E

53,41

33.19 mi

0,30

77



Follow
Veere ^^
[N57] ^^

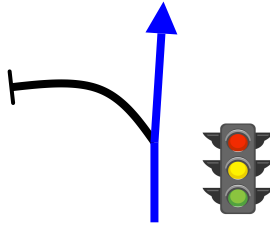
51°29.754'N
3°36.418'E

53,95

33.52 mi

0,54 ↓

78



Keep Right
[Klein Vlaanderen]

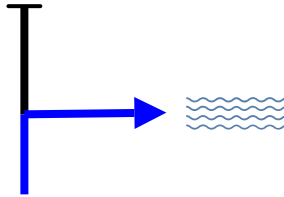
51°30.006'N
3°36.370'E

54,06

33.59 mi

0,11 ↓

79



[Volderijlaagte]

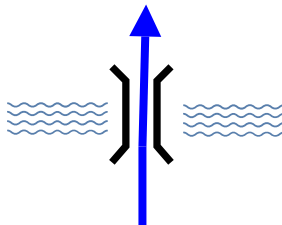
51°30.057'N
3°36.421'E

54,19

33.67 mi

0,13 ↓

80



[Herenburg]

51°30.013'N
3°36.510'E

54,3⁹

33.80 mi

0,20 ↓

81

54,3⁹

33.80 mi

0,00

82

54,3⁹

33.80 mi

0,00 ↓

83

54,5³

33.88 mi

0,14 ↓

84

54,5⁶

33.90 mi

0,03 ↓

85

PARK HERE
if you have a
RED lanyard.

Skip the next item

PARK ON THE
"ABDIJPLEIN"
(600 meter ahead)
if you have a **BLUE**
lanyard. Goto # 86 of
the roadbook

To the Market
of Middelburg



Please
lay your
cardboard
under your
car

**PARK AT "MARKT
MIDDELBURG"**



51° 29.964'N
3° 36.650'E

PARK AT
"ABDIJPLEIN"



51° 29.964'N
3° 36.653'E



51° 29.964'N
3° 36.657'E

**Parking "Markt"
Middelburg**

**Follow
instructions of the
organisation**

51° 29.904'N
3° 36.704'E

**Parking Markt
Middelburg**
Leave de Markt
before 1700h, the
same way you

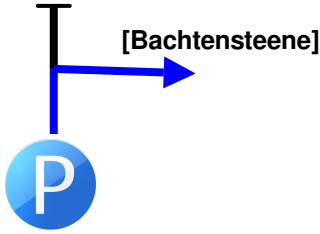
entered 51° 29.915'N
3° 36.686'E

54,67

33.97 mi

0,11 ↓

86



Follow the road
further to the
"Abdijplein"

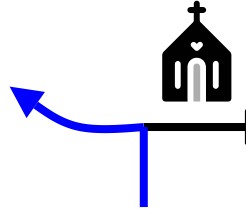
51°29.971'N
3°36.655'E

54,86

34.09 mi

0,19 ↓

87



<< Doorgaand
Verkeer

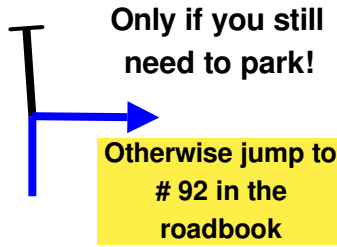
51°29.989'N
3°36.814'E

55,02

34.19 mi

0,16 ↓

88



51°30.067'N
3°36.862'E

55,02

34.19 mi

0,00

89

With a BLUE lanyard park here for a visit to Middelburg



51°30.066'N
3°36.865'E

55,05

34.21 mi

0,03 ↓

90



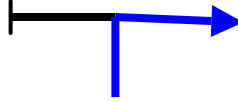
Please lay your cardboard under your car

Parking "ABDIJPLEIN" Middelburg
Follow instructions of the organisation

51°30.059'N
3°36.881'E

55,07

34.22 mi



Leave the "Abdijplein" via
the same gate you
entered!
Please leave before 1700h

51°30.069'N
3°36.865'E

0,02

91

55,12

0,00

0000

Reset



Doorgaand
Verkeer >>

0000

Reset

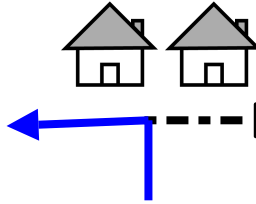
51°30.088'N
3°36.888'E

0,05

92

0,22

0.14 mi



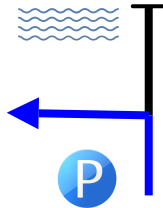
51°29.986'N
3°36.984'E

0,22

93

0,36

0.22 mi



[Dam]

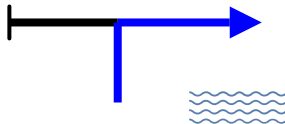
51°30.023'N
3°37.090'E

0,14

94

0,41

0.25 mi



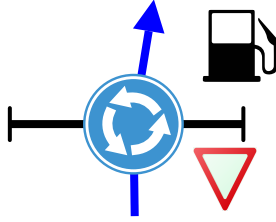
51°30.044'N
3°37.069'E

0,05

95

1,4⁹

0.93 mi



OK Express

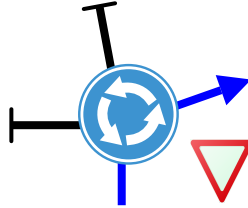
1,08

96

51°30.178'N
3°37.713'E

1,7⁹

1.11 mi



Domburg >>
Veere >>

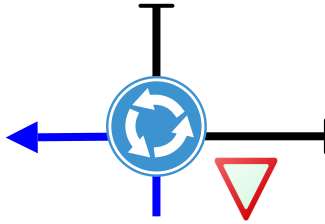
0,30

97

51°30.309'N
3°37.863'E

2,2⁴

1.39 mi



<< Domburg
<< Burgh-Haamstede

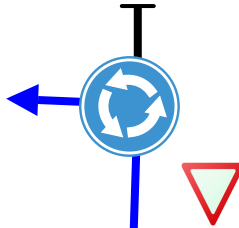
0,45

98

51°30.474'N
3°38.143'E

3,9⁹

2.48 mi



<< St Laurens

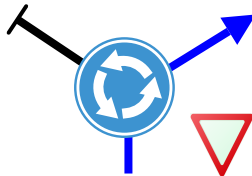
1,75

99

51°31.171'N
3°37.231'E

4,5⁵

2.83 mi



[President
Rooseveltlaan]

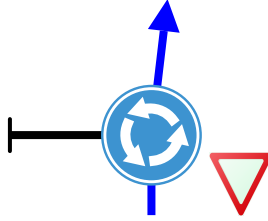
0,56

100

51°30.994'N
3°36.983'E

5,50

3.42 mi



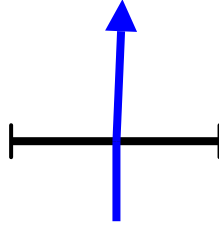
51°30.611'N
3°36.511'E

0,95 ↓

101

5,74

3.57 mi



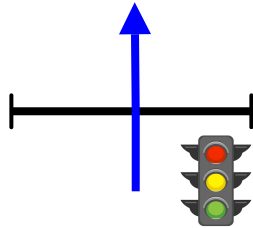
51°30.503'N
3°36.450'E

0,24

102

6,20

3.85 mi



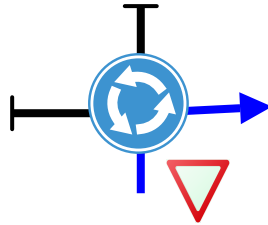
51°30.383'N
3°36.103'E

0,46 ↓

103

6,40

3.98 mi



Grijpskerke >>

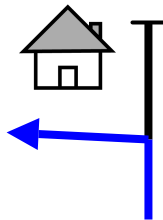
51°30.342'N
3°35.945'E

0,20

104

7,55

4.69 mi



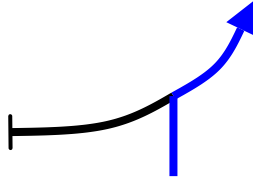
51°30.509'N
3°35.008'E

1,15

105

12,05

7.49 mi



[Zoutelandsweg]

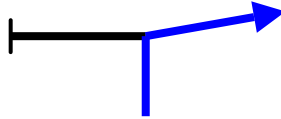
4,50

106

51°30.143'N
3°31.492'E

12,78

7.94 mi



Domburg >>
Zoutelande >>
Westkapelle >>

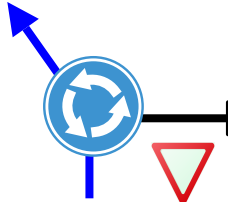
0,73

107

51°30.091'N
3°30.880'E

14,01

8.71 mi



Zoutelande ^^
Westkapelle ^^

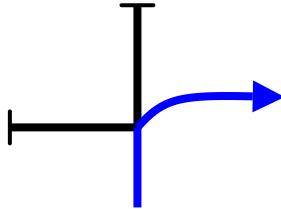
1,23

108

51°30.316'N
3°29.962'E

15,10

9.38 mi



Westkapelle >>

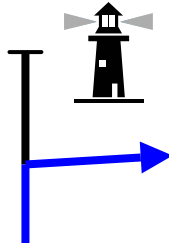
1,09

109

51°30.059'N
3°29.217'E

19,70

12.24 mi



Aagtekerke >>
N57 >>
Middelburg >>
Veere >>

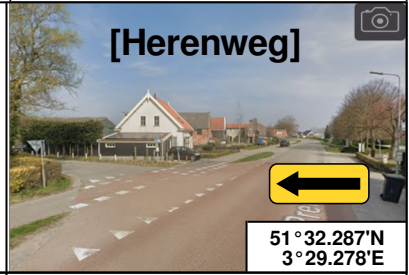
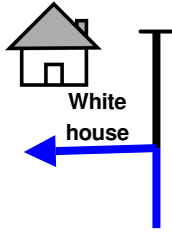
4,60

110

51°31.708'N
3°26.838'E

22,8³

14.19 mi

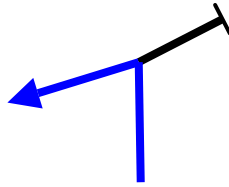


3,13

111

24,4⁹

15.22 mi



[Babelweg]

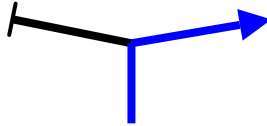
1,66↓

112

51°33.099'N
3°28.701'E

24,7⁷

15.39 mi



[Trommelweg]

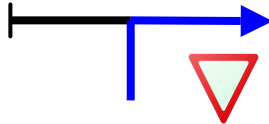
0,28

113

51°33.016'N
3°28.496'E

25,2⁶

15.70 mi

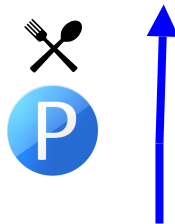


0,49↓

114

25,3⁹

15.78 mi



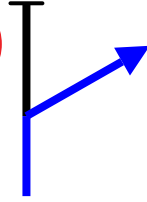
51°33.278'N
3°28.380'E

0,13

115

26,9⁸

16.76 mi



**Andere
richtingen >>**

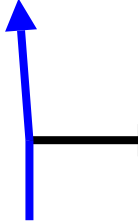
51°33.710'N
3°29.563'E

1,59

116

27,2⁸

16.95 mi



**Follow
Domburg
P-Route**

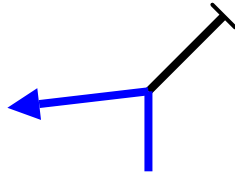
51°33.718'N
3°29.782'E

0,30 ↓

117

27,5²

17.10 mi



**<< Westkapelle
<< Centrum**

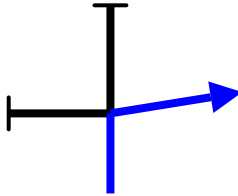
51°33.731'N
3°29.972'E

0,24 ↓

118

27,7⁴

17.24 mi



P-Route >>

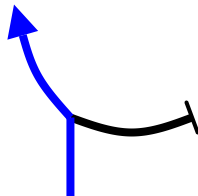
51°33.849'N
3°29.945'E

0,22

119

28,1¹

17.47 mi

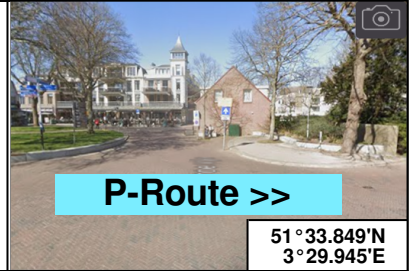


**<< Oostkapelle
<< Serooskerke**

51°33.904'N
3°30.249'E

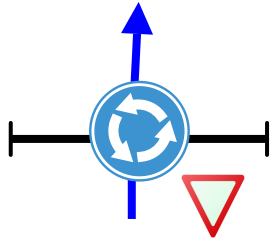
0,37

120



29,4⁸

18.32 mi



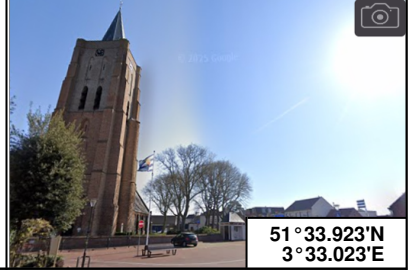
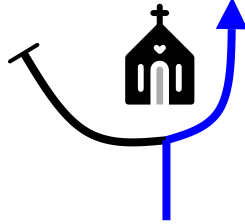
51°34.068'N
3°31.357'E

1,37

121

31,4⁹

19.57 mi



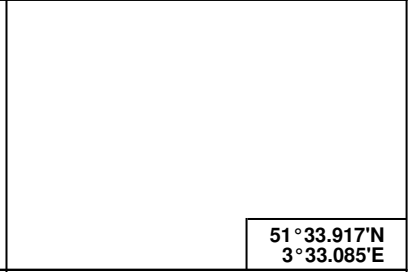
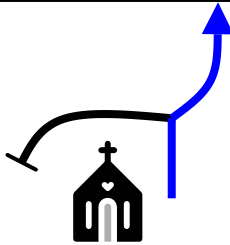
51°33.923'N
3°33.023'E

2,01↓

122

31,5⁷

19.62 mi



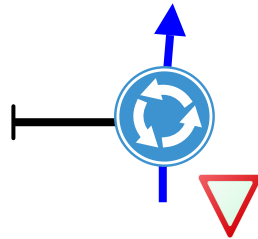
51°33.917'N
3°33.085'E

0,08

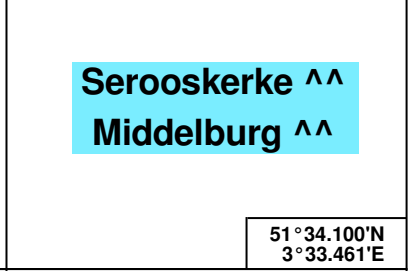
123

32,1³

19.96 mi



Serooskerke ^^
Middelburg ^^



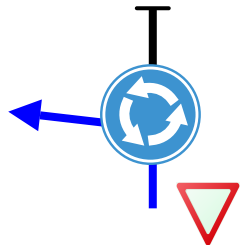
51°34.100'N
3°33.461'E

0,56

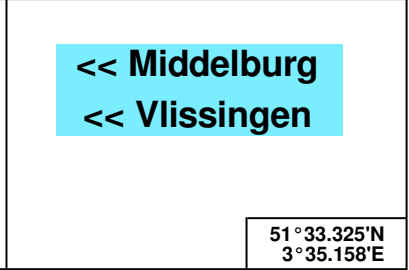
124

34,7³

21.58 mi



<< Middelburg
<< Vlissingen



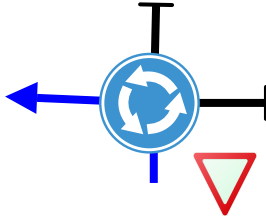
51°33.325'N
3°35.158'E

2,60

125

35,71

22.19 mi



<< Vrouwenpolder
<<Burgh-Haamstede

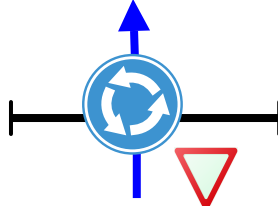
0,98

126

51°33.457'N
3°35.950'E

38,14

23.70 mi



Burgh-Haamstede ^^
Neeltje Jans

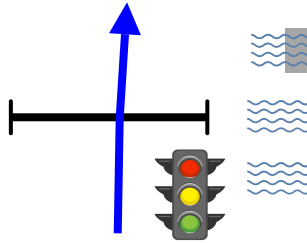
2,43

127

51°34.460'N
3°37.182'E

39,48

24.53 mi



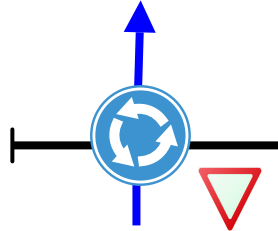
51°35.099'N
3°37.675'E

1,34

128

42,82

26.61 mi



Neeltje Jans
Burgh-Haamstede ^^

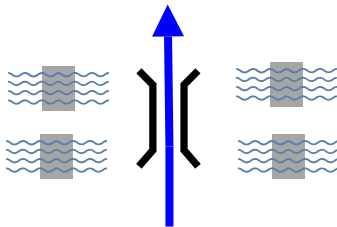
3,34

129

51°35.316'N
3°40.445'E

44,26

27.50 mi



"Oosterschelde kering"
Eastern Scheldt
Barrier

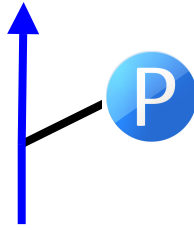
1,44

130

51°36.002'N
3°40.931'E

48,48

30.12 mi



"Neeltje Jans"
optional visit
(no free entrance!)
and very nice fresh
lobster in the restaurant!

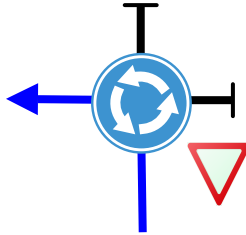
51°38.029'N
3°42.123'E

4,22

131

54,25

33.71 mi



<< Westenschouwen

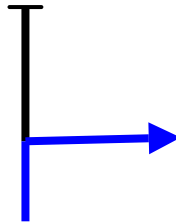
51°40.818'N
3°43.594'E

5,77

132

54,66

33.96 mi



**Grand Hotel
Ter Duin >>**

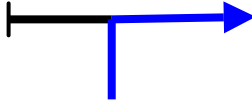
51°40.732'N
3°43.354'E

0,41

133

55,05

34.21 mi



[Hogeweg]

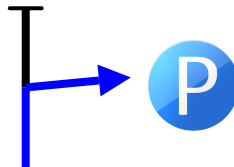
51°40.900'N
3°43.159'E

0,39

134

55,41

34.43 mi



**Parking
HOTEL**

51°41.041'N
3°43.344'E

0,36

135

162
Kilometers

135
Waypoints

162 km
Fuel Range

START
51°41.049'N
3°43.338'E

FINISH
51°41.041'N
3°43.344'E

POWERED BY



Sunday 31 May 2026

WWW.RALLYNAVIGATOR.COM